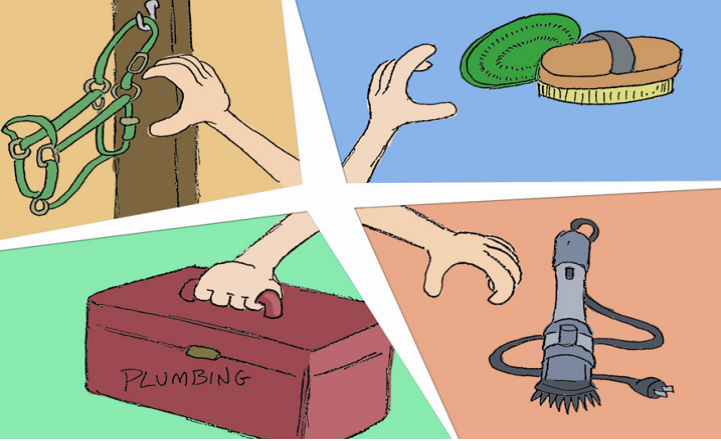
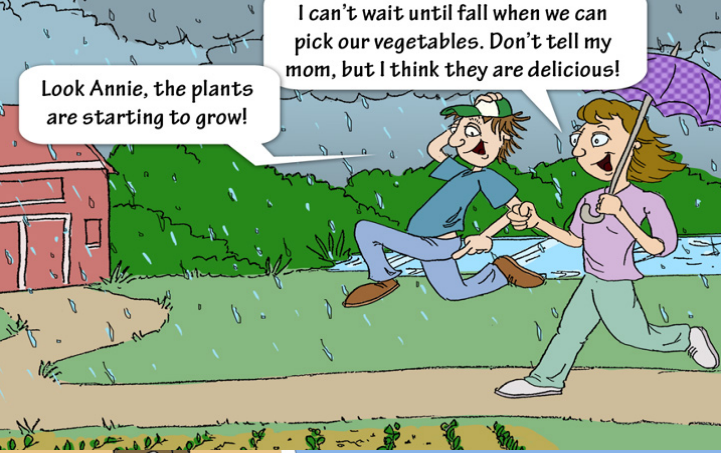
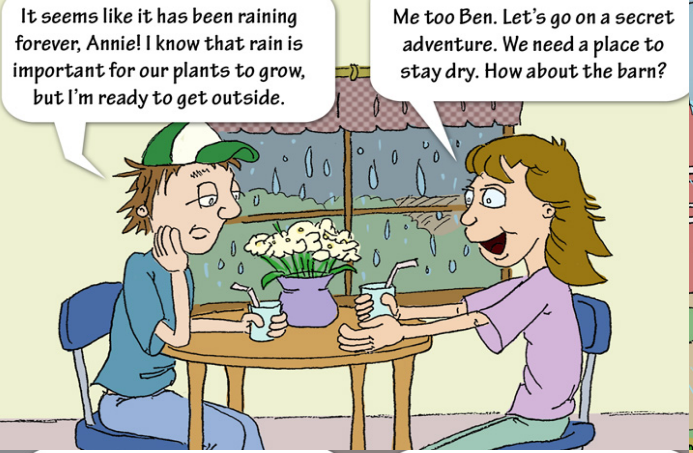


BARN DETECTIVE

starring
Annie Appleseed
&
Benjamin P. Farmington





This looks like a brush. I bet it is used to brush the horses!

Great job Detective Annie. I use this brush on the horses before and after we ride them. It helps keep their coat clean and their body healthy.



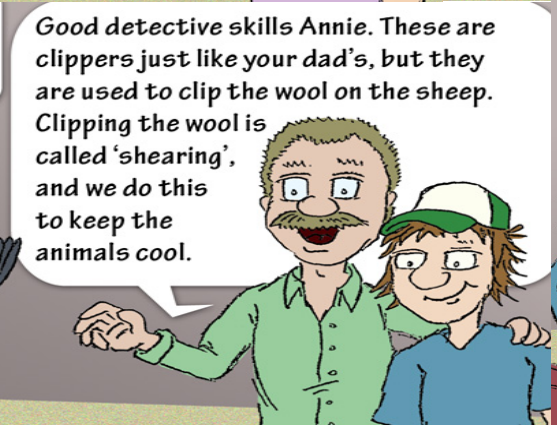
This is too big for the sheep and pigs, so it must be for the horses. What is it?



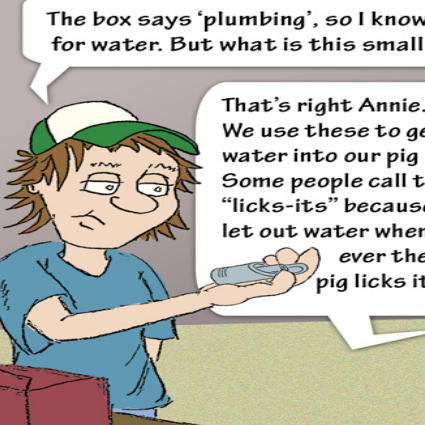
This is called a halter. We use halters on animals around the farm when we take them for a walk. It is like a collar for a dog. It helps keep the animal safe when we are moving them.



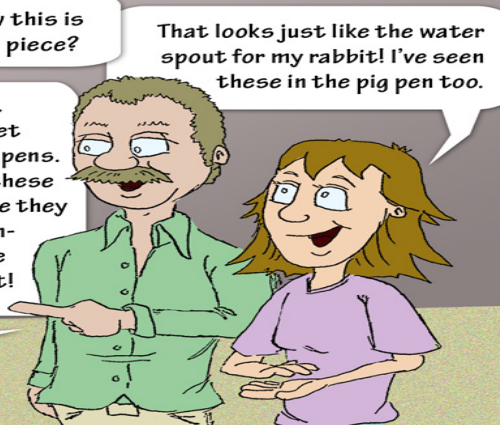
This looks like what my dad uses to shave his beard. But this is much bigger!



Good detective skills Annie. These are clippers just like your dad's, but they are used to clip the wool on the sheep. Clipping the wool is called 'shearing', and we do this to keep the animals cool.



The box says 'plumbing', so I know this is for water. But what is this small piece?



That looks just like the water spout for my rabbit! I've seen these in the pig pen too.

That's right Annie. We use these to get water into our pig pens. Some people call these "licks-its" because they let out water whenever the pig licks it!



Looks like the sun is coming back out!

Thanks for helping us on our detective adventure, Uncle Luke!

You are welcome Ben. I'm glad you discovered how farmers care for animals.



The End